

# Chaconne dalla Partita II BWV1004

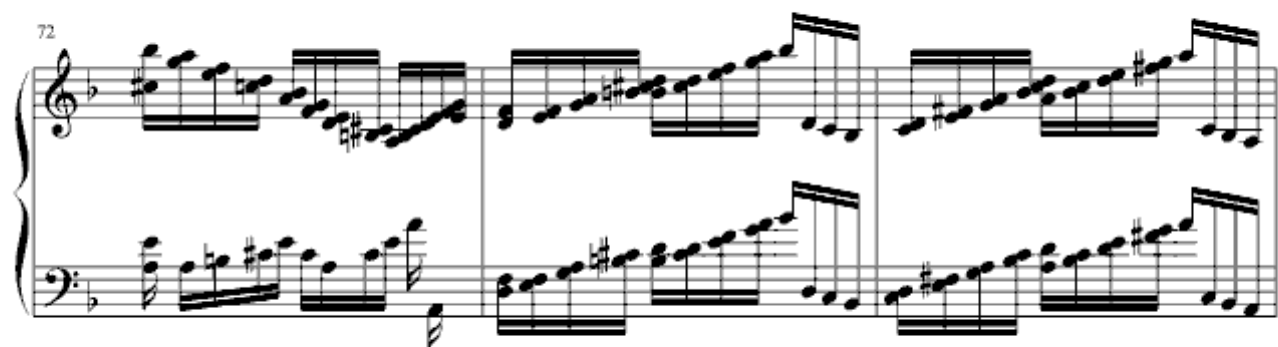
Ch.Ashura/J.S.Bach

Piano













102

104

106

108

110

huanqiugangqin.com  
环球钢琴网

112

Measures 112-113. The right hand features rapid sixteenth-note runs, while the left hand plays a simple bass line with eighth notes.

114

Measures 114-115. The right hand continues with sixteenth-note patterns, and the left hand has a few chords and eighth notes.

116

Measures 116-117. The right hand has dense sixteenth-note chords, and the left hand plays a steady eighth-note bass line. A large red watermark "环球钢琴网" is visible across the center.

118

Measures 118-120. The right hand features continuous sixteenth-note runs, and the left hand plays a consistent eighth-note bass line.

121

Measures 121-123. The right hand has chords and some sixteenth-note runs, while the left hand plays a more complex bass line with sixteenth notes and chords.





huanqiugangqin.com  
环球钢琴网