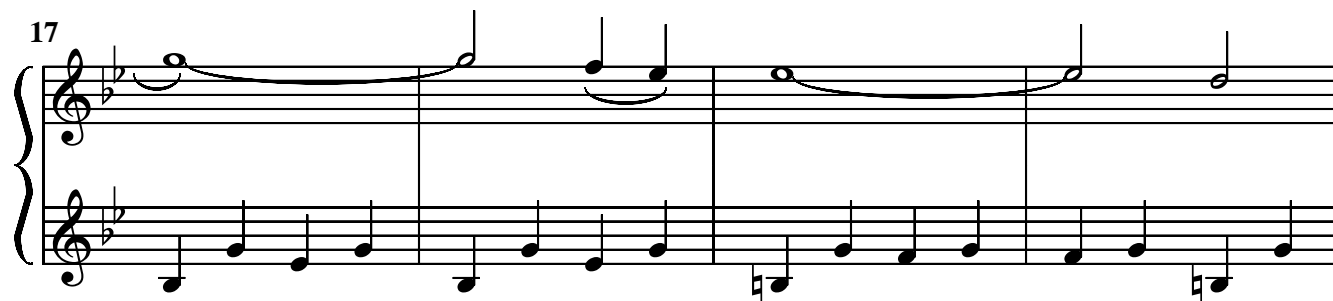
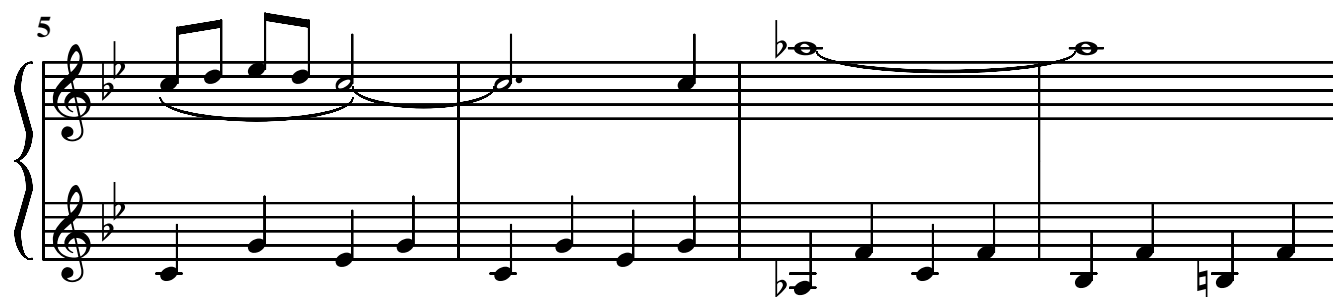
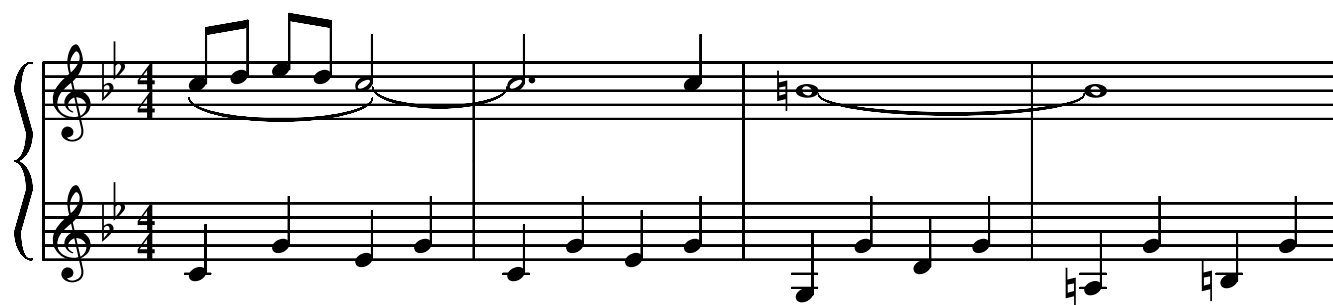


# Candyman

*from the motion picture "Candyman"*

Written by Phillip Glass  
Arranged by Joseph Rozell



21

System 1 (Measures 21-24): The right hand features a melodic line with a half note G4, a half note A4, a quarter note Bb4, a quarter note A4, a half note G4, and a half note F#4. The left hand plays a steady eighth-note accompaniment: Bb3, A3, G3, F#3, E3, D3, C3, Bb2.

25

System 2 (Measures 25-28): The right hand continues with a half note E4, a half note D4, a quarter note C4, a quarter note B3, a half note A3, and a half note G3. The left hand accompaniment remains the same eighth-note pattern.

29

System 3 (Measures 29-32): The right hand has a half note F#3, a half note E3, a quarter note D3, a quarter note C3, a half note B2, and a half note A2. The left hand accompaniment continues with the eighth-note pattern.

33

System 4 (Measures 33-36): The right hand features a half note G2, a half note F#2, a quarter note E2, a quarter note D2, a half note C2, and a half note B1. The left hand accompaniment continues with the eighth-note pattern.

37

System 5 (Measures 37-40): The right hand has a half note A1, a half note G1, a quarter note F#1, a quarter note E1, a half note D1, and a half note C1. The left hand accompaniment continues with the eighth-note pattern.

41

System 6 (Measures 41-44): The right hand has a half note B1, a half note A1, a quarter note G1, a quarter note F#1, a half note E1, and a half note D1. The left hand accompaniment continues with the eighth-note pattern. The system concludes with a double bar line.