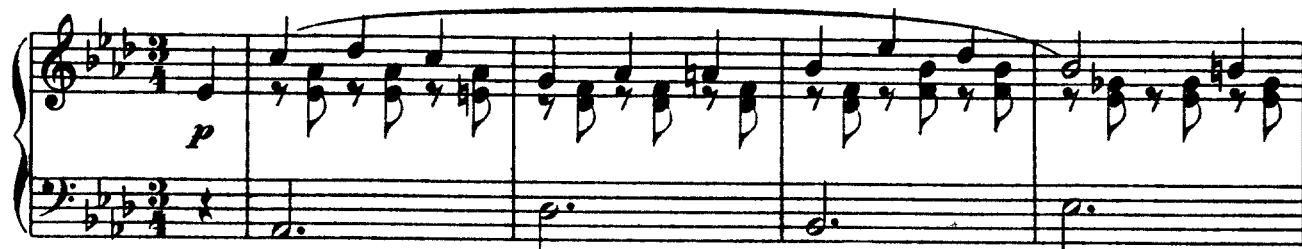


Faure
3 Romances Sans Paroles

I.
Op. 17, No. 1

Andante quasi Allegretto



mf *p*

sempre legato *cresc.* *f sempre*

f *dimin.*

pp *ritard.* *dolciss.* *a tempo*

pp

Ped. * Ped. * Ped. * Ped. * Ped. *

poco a poco cresc.

Ped. *

sempre f

espressivo

Ped. *

dimin.

Ped. * Ped. * Ped. * Ped. * Ped. * Ped. *

perdendosi e rall.

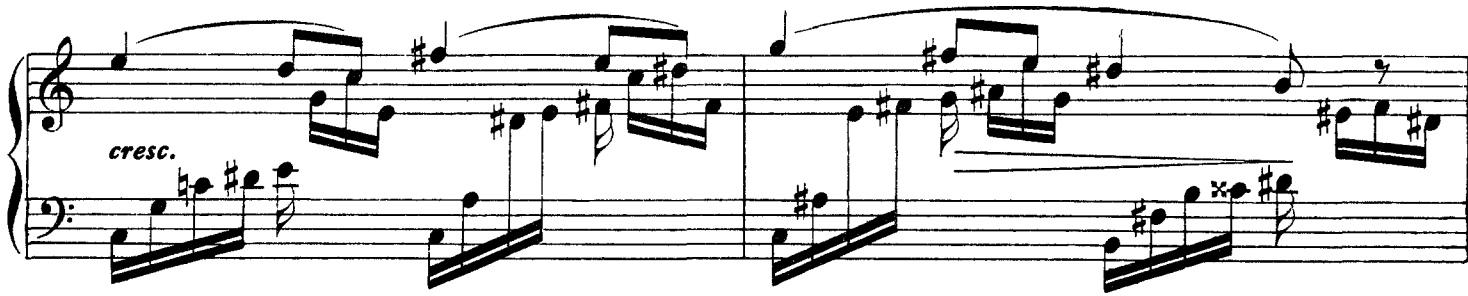
a tempo

ppp

Ped. * Ped. * Ped. * Ped. * Ped. * Ped. *

II.
Op. 17, No. 2

Allegro molto



This image displays the first twelve measures of a piano piece, arranged in six systems of two staves each (treble and bass clef). The music is written in a key with three sharps (F# major or C# minor) and a 3/4 time signature. The notation includes various musical symbols such as notes, rests, slurs, and dynamic markings.

- Measure 1:** Treble staff begins with a half note G4, followed by a quarter note A4. Bass staff begins with a half note F#3, followed by a quarter note G3. Dynamic marking: *cresc.*
- Measure 2:** Treble staff continues with a half note B4, followed by a quarter note C#5. Bass staff continues with a half note A3, followed by a quarter note B3.
- Measure 3:** Treble staff continues with a half note D5, followed by a quarter note E5. Bass staff continues with a half note C#4, followed by a quarter note D4.
- Measure 4:** Treble staff continues with a half note F#5, followed by a quarter note G5. Bass staff continues with a half note E4, followed by a quarter note F#4.
- Measure 5:** Treble staff continues with a half note A5, followed by a quarter note B5. Bass staff continues with a half note G4, followed by a quarter note A4. Dynamic marking: *p*
- Measure 6:** Treble staff continues with a half note C#6, followed by a quarter note D6. Bass staff continues with a half note B4, followed by a quarter note C#5.
- Measure 7:** Treble staff continues with a half note E6, followed by a quarter note F#6. Bass staff continues with a half note D5, followed by a quarter note E5. Dynamic marking: *f*
- Measure 8:** Treble staff continues with a half note G6, followed by a quarter note A6. Bass staff continues with a half note E5, followed by a quarter note F#5.
- Measure 9:** Treble staff continues with a half note B6, followed by a quarter note C#7. Bass staff continues with a half note F#5, followed by a quarter note G5. Dynamic marking: *cresc.*
- Measure 10:** Treble staff continues with a half note D7, followed by a quarter note E7. Bass staff continues with a half note A5, followed by a quarter note B5.
- Measure 11:** Treble staff continues with a half note F#7, followed by a quarter note G7. Bass staff continues with a half note C#6, followed by a quarter note D6. Dynamic marking: *p*
- Measure 12:** Treble staff continues with a half note A7, followed by a quarter note B7. Bass staff continues with a half note E6, followed by a quarter note F#6.

The piece concludes with a final measure (measure 12) featuring a half note G7 in the treble and a half note C#6 in the bass, with a dynamic marking of *f sempre*.

This image displays the first six measures of a piano piece, arranged in three systems of two staves each (treble and bass clef). The music is written in a key with one sharp (F#) and a 3/4 time signature. Measure 1 begins with a treble staff containing eighth-note runs and a bass staff with a whole note chord. Measure 2 continues the treble staff's eighth-note pattern while the bass staff has a half note. Measure 3 features a treble staff with eighth notes and a bass staff with a half note. Measure 4 shows a treble staff with eighth notes and a bass staff with a half note. Measure 5 has a treble staff with eighth notes and a bass staff with a half note. Measure 6 concludes with a treble staff containing a half note and a bass staff with a half note. Dynamic markings include *p* (piano) at the start of measure 3 and *cresc.* (crescendo) in measure 5. A fermata is placed over the final note of measure 6. The notation includes various musical symbols such as beams, slurs, and accidentals.

This musical score page contains measures 1 through 24 of a piece by Frédéric Chopin, arranged in six systems of two staves each (treble and bass clef). The key signature is one sharp (F#), and the time signature is 3/4. The notation includes various musical symbols such as notes, rests, slurs, and dynamic markings.

- Measure 1:** Treble staff begins with a half note G4, followed by eighth notes A4, B4, and C5. Bass staff begins with a half note F#3, followed by eighth notes G3, A3, and B3. Dynamic marking: *pp*.
- Measure 2:** Treble staff continues with eighth notes D5, C5, B4, and A4. Bass staff continues with eighth notes C4, B3, A3, and G3.
- Measure 3:** Treble staff continues with eighth notes G4, F#4, E4, and D4. Bass staff continues with eighth notes F#3, E3, D3, and C3.
- Measure 4:** Treble staff continues with eighth notes C4, B3, A3, and G3. Bass staff continues with eighth notes B2, A2, G2, and F#2.
- Measure 5:** Treble staff continues with eighth notes F#3, E3, D3, and C3. Bass staff continues with eighth notes B2, A2, G2, and F#2. Dynamic marking: *cresc.*
- Measure 6:** Treble staff continues with eighth notes B2, A2, G2, and F#2. Bass staff continues with eighth notes E2, D2, C2, and B1.
- Measure 7:** Treble staff continues with eighth notes A2, G2, F#2, and E2. Bass staff continues with eighth notes D2, C2, B1, and A1.
- Measure 8:** Treble staff continues with eighth notes G2, F#2, E2, and D2. Bass staff continues with eighth notes C2, B1, A1, and G1.
- Measure 9:** Treble staff continues with eighth notes F#2, E2, D2, and C2. Bass staff continues with eighth notes B1, A1, G1, and F#1.
- Measure 10:** Treble staff continues with eighth notes E2, D2, C2, and B1. Bass staff continues with eighth notes A1, G1, F#1, and E1.
- Measure 11:** Treble staff continues with eighth notes D2, C2, B1, and A1. Bass staff continues with eighth notes G1, F#1, E1, and D1.
- Measure 12:** Treble staff continues with eighth notes C2, B1, A1, and G1. Bass staff continues with eighth notes F#1, E1, D1, and C1.
- Measure 13:** Treble staff continues with eighth notes B1, A1, G1, and F#1. Bass staff continues with eighth notes E1, D1, C1, and B0.
- Measure 14:** Treble staff continues with eighth notes A1, G1, F#1, and E1. Bass staff continues with eighth notes D1, C1, B0, and A0.
- Measure 15:** Treble staff continues with eighth notes G1, F#1, E1, and D1. Bass staff continues with eighth notes C1, B0, A0, and G0.
- Measure 16:** Treble staff continues with eighth notes F#1, E1, D1, and C1. Bass staff continues with eighth notes B0, A0, G0, and F#0.
- Measure 17:** Treble staff continues with eighth notes E1, D1, C1, and B0. Bass staff continues with eighth notes A0, G0, F#0, and E0.
- Measure 18:** Treble staff continues with eighth notes D1, C1, B0, and A0. Bass staff continues with eighth notes G0, F#0, E0, and D0.
- Measure 19:** Treble staff continues with eighth notes C1, B0, A0, and G0. Bass staff continues with eighth notes F#0, E0, D0, and C0.
- Measure 20:** Treble staff continues with eighth notes B0, A0, G0, and F#0. Bass staff continues with eighth notes E0, D0, C0, and B0.
- Measure 21:** Treble staff continues with eighth notes A0, G0, F#0, and E0. Bass staff continues with eighth notes D0, C0, B0, and A0.
- Measure 22:** Treble staff continues with eighth notes G0, F#0, E0, and D0. Bass staff continues with eighth notes C0, B0, A0, and G0.
- Measure 23:** Treble staff continues with eighth notes F#0, E0, D0, and C0. Bass staff continues with eighth notes B0, A0, G0, and F#0.
- Measure 24:** Treble staff continues with eighth notes E0, D0, C0, and B0. Bass staff continues with eighth notes A0, G0, F#0, and E0. Dynamic marking: *p*.

molto cresc.

sempre f

The sheet music is arranged in six systems, each with a grand staff (treble and bass clef). The first system is marked *molto cresc.* and the third system is marked *sempre f*. The music is in G major and 3/4 time. The first system has two measures, the second has two measures, the third has two measures, the fourth has two measures, the fifth has two measures, and the sixth has two measures. The music features flowing arpeggiated figures in the right hand and more static accompaniment in the left hand.

Sheet music for Faure's 3 Romances Sans Paroles, Op. 29. The page contains six systems of piano music, each with a grand staff (treble and bass clef). The music is in D major and 3/4 time. It features various musical notations including slurs, ties, and dynamic markings. The first system shows a flowing melody in the right hand and a supporting bass line. The second system includes a *cresc.* marking. The third system has a *p* marking. The fourth system has a *pp* marking. The fifth system has a *sempre p* marking. The sixth system continues the melodic and harmonic development.

III.
Op. 17, No. 3

Andante moderato

dolce

sempre legato

sempre legato

con suono

Sheet music for Faure's 3 Romances Sans Paroles, measures 1-10. The music is in G-flat major (three flats) and 3/4 time. The first system (measures 1-5) begins with a piano (*p*) dynamic. The second system (measures 6-10) begins with a mezzo-forte (*mf*) dynamic. The third system (measures 11-15) is marked *più dolce*. The fourth system (measures 16-20) includes the markings *poco rit.* and *a tempo*. The fifth system (measures 21-25) includes the marking *dolcissimo*. The music features a flowing melody in the right hand and a rhythmic accompaniment in the left hand, with various articulations and dynamics throughout.

cresc. *molto* *f*

dim. *p*

pp *p*

pp *sempre dimin. sin'al Fine* *p*

poco rit. *ppp*